

BPCA Series



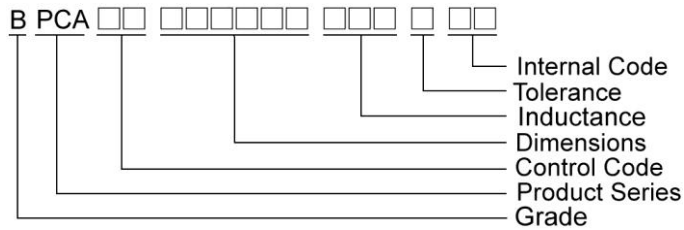
Features

- RoHS, Halogen Free and REACH Compliance
- Shielded power inductor

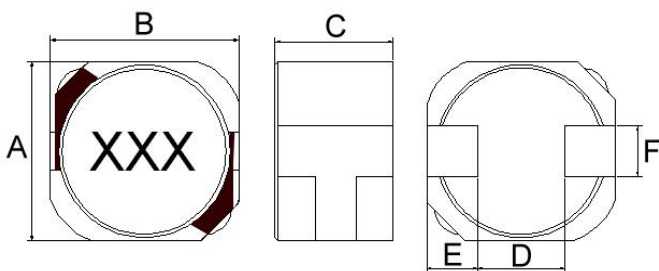
Applications

- Thin-screen TVs
- LCDs
- AV equipment
- STBs
- LED lights

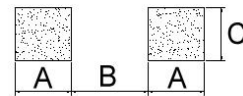
Product Identification



Shape and Dimensions



Recommended Pattern



Dimensions in mm

TYPE	Shape and Dimensions						Recommended Pattern		
	A	B	C	D	E	F	A	B	C
BPCA00060645	6.0±0.2	6.3±0.2	4.6±0.3	2.9	1.7±0.1	2.0±0.1	2.1	2.8	2.2
BPCA00070745	7.0±0.2	7.4±0.2	4.5±0.3	3.4	2.0±0.1	2.0±0.1	2.4	3.3	2.2

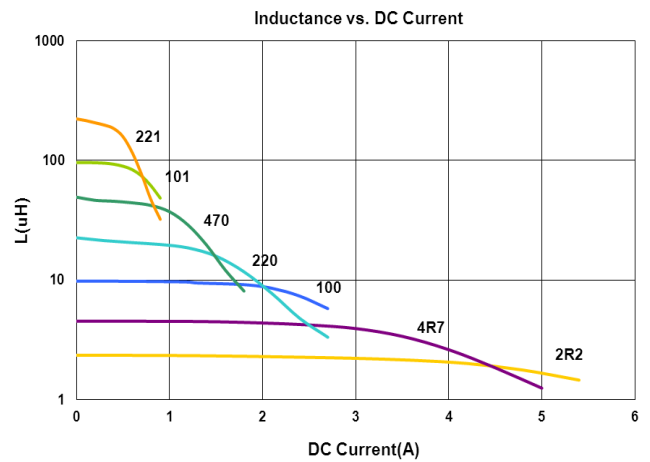
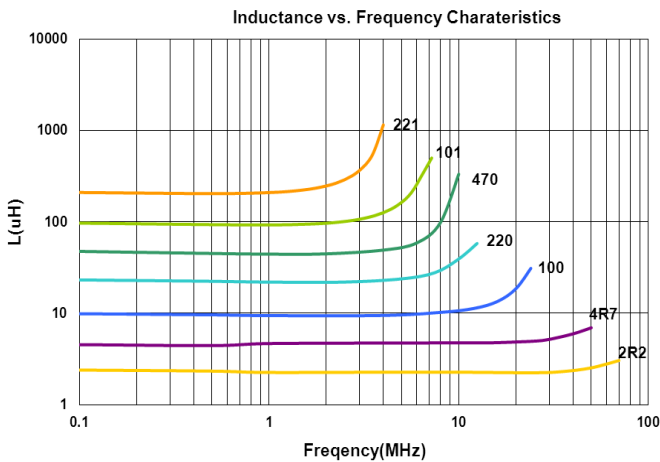
SMD Shielded Power Inductors - BPCA Series

Standard Specifications

Part Number	Inductance (uH)	Tolerance (±%)	Test Frequency (kHz)	RDC (Ω) Max	Isat (A) Typ(Max)	Irms (A)	Marking
BPCA000606451R0□00	1.0	30	100	0.0143	6.7(6.0)	4.8	1R0
BPCA000606451R5□00	1.5	30	100	0.0169	5.5(5.2)	4.5	1R5
BPCA000606452R2□00	2.2	30	100	0.0195	4.2(3.6)	4.1	2R2
BPCA000606453R3□00	3.3	30	100	0.0247	3.5(3.2)	3.7	3R3
BPCA000606454R7□00	4.7	30	100	0.0299	3.1(2.5)	3.3	4R7
BPCA000606456R8□00	6.8	30	100	0.0351	2.8(2.0)	3.1	6R8
BPCA00060645100□00	10	20	100	0.042	2.1(1.7)	2.6	100
BPCA00060645150□00	15	20	100	0.072	1.7(1.4)	2.0	150
BPCA00060645220□00	22	20	100	0.09	1.4(1.1)	1.8	220
BPCA00060645330□00	33	20	100	0.12	1.1(0.9)	1.6	330
BPCA00060645470□00	47	20	100	0.156	0.97(0.78)	1.4	470
BPCA00060645680□00	68	20	100	0.24	0.81(0.65)	1.1	680
BPCA00060645101□00	100	20	100	0.384	0.61(0.55)	0.86	101
BPCA00060645151□00	150	20	100	0.576	0.53(0.46)	0.72	151
BPCA00060645221□00	220	20	100	0.864	0.47(0.36)	0.57	221
BPCA00060645331□00	330	20	100	1.104	0.36(0.28)	0.49	331
BPCA00060645471□00	470	20	100	1.56	0.28(0.25)	0.41	471

Note: When ordering, please specify tolerance code. Tolerance: M=±20% , T=±30%

- Operating temperature range - 40°C ~ 105°C(Including self - temperature rise)
- Isat for Inductance drop 30% from its value without current
- The actual use current is suggested not to be out of Isat*80%
- I rms for a 40°C temprature rise from 25°C ambient.
- Measure Equipment :
 L : HP4284+42841A, 100kHz/ 1V
 RDC : Chroma 16502
 Isat : HP4284+42841A



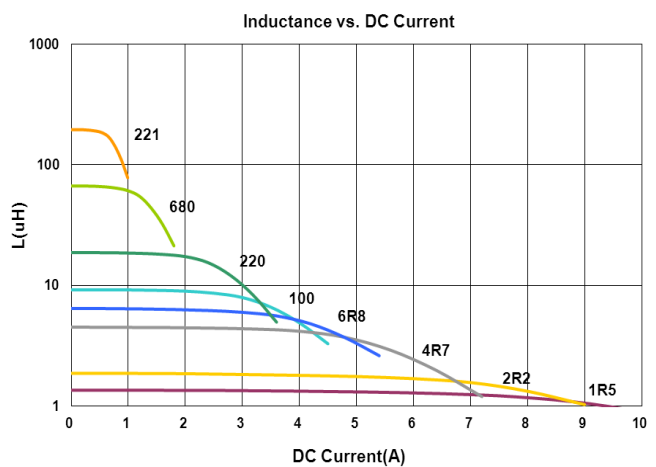
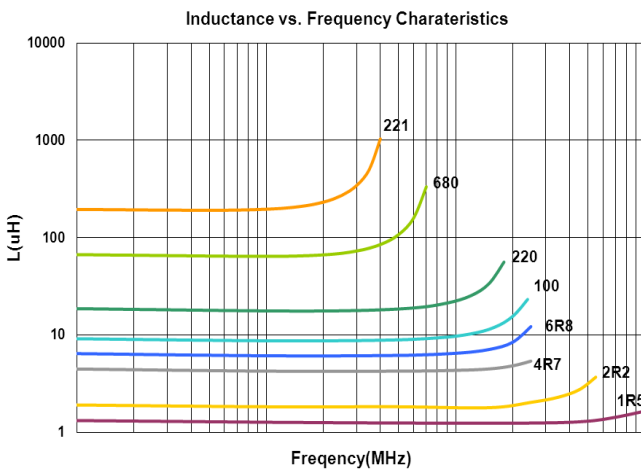
SMD Shielded Power Inductors - BPCA Series

Standard Specifications

Part Number	Inductance (uH)	Tolerance (±%)	Test Frequency (kHz)	RDC (Ω) Max	Isat (A) Typ(Max)	Irms (A)	Marking
BPCA000707451R0□00	1.0	30	100	0.0117	9.3(7.6)	6.5	1R0
BPCA000707451R5□00	1.5	30	100	0.013	7.8(6.2)	5.4	1R5
BPCA000707452R2□00	2.2	30	100	0.0169	7.3(6.0)	5.1	2R2
BPCA000707453R3□00	3.3	30	100	0.0208	5.8(4.6)	4.8	3R3
BPCA000707454R7□00	4.7	30	100	0.0234	4.8(4.0)	4.1	4R7
BPCA000707456R8□00	6.8	30	100	0.0264	3.6(3.0)	3.9	6R8
BPCA00070745100□00	10	20	100	0.0396	3.2(2.6)	3.1	100
BPCA00070745150□00	15	20	100	0.066	2.4(2.0)	2.6	150
BPCA00070745220□00	22	20	100	0.0828	2.1(1.6)	2.2	220
BPCA00070745330□00	33	20	100	0.116	1.6(1.3)	1.8	330
BPCA00070745470□00	47	20	100	0.156	1.3(1.1)	1.7	470
BPCA00070745680□00	68	20	100	0.204	1.08(0.95)	1.5	680
BPCA00070745101□00	100	20	100	0.312	0.9(0.8)	1.05	101
BPCA00070745151□00	150	20	100	0.516	0.8(0.65)	0.95	151
BPCA00070745221□00	220	20	100	0.66	0.7(0.54)	0.75	221
BPCA00070745331□00	330	20	100	0.96	0.55(0.45)	0.58	331
BPCA00070745471□00	470	20	100	1.44	0.45(0.37)	0.46	471

Note: When ordering, please specify tolerance code. Tolerance: M=±20% , T=±30%

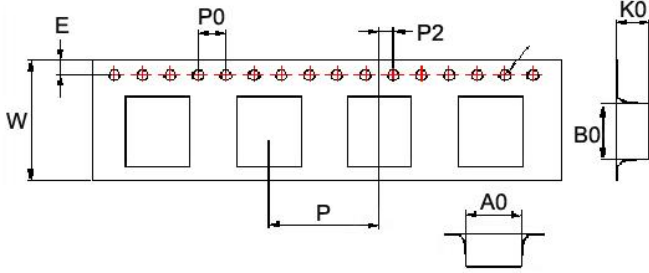
- Operating temperature range - 40°C ~ 105°C(Including self - temperature rise)
- Isat for Inductance drop 30% from its value without current
- The actual use current is suggested not to be out of Isat*80%
- I rms for a 40°C temprature rise from 25°C ambient.
- Measure Equipment :
 L : HP4284+42841A, 100kHz/ 1V
 RDC : Chroma 16502
 Isat : HP4284+42841A



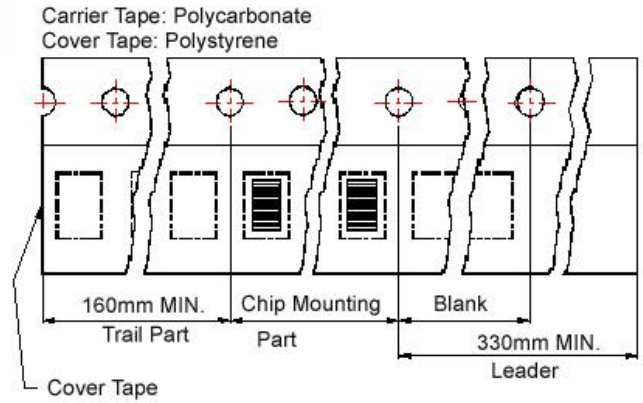
SMD Shielded Power Inductors - BPCA Series

Packaging Specifications

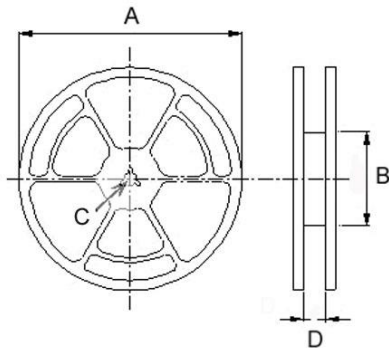
Tape Dimensions



Tape Material



Reel Dimensions



Dimensions in mm

TYPE	Tape Dimensions									Reel Dimensions				Quantity PCS / REEL
	A0	B0	K0	D	E	W	P	P0	P2	A	B	C	D	
BPCA00060645	6.9	6.3	5	1.55	1.75	16	12	4	2	330	100	13	16	1000
BPCA00070745	7.7	7.35	5	1.55	1.75	16	12	4	2	330	100	13	16	1000