

## GQ For Inverter, High Ripple Series

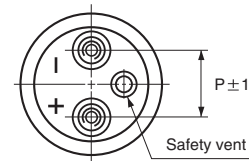
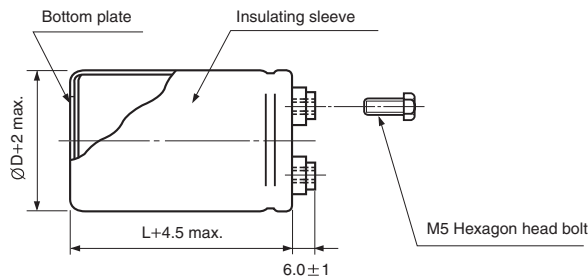
- High ripple current compared with GF series
- High reliability, long life guaranteed for 5000 hours load life at 85°C
- Suited for use in industrial power supplies for inverters
- Complied to the RoHS directive



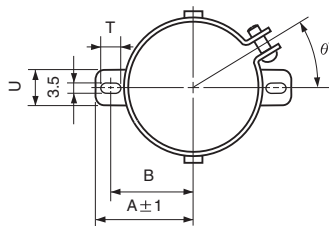
Item	Characteristics	
Operating temperature range	-25 ~ +85°C	
Capacitance tolerance	±20% at 120Hz, 20°C	
Leakage current max.	$I=3\sqrt{CV}$ (μA) (after 5 minutes)	
Dissipation factor max.	0.25 max. at 120Hz, 20°C	
Load life (after application of the rated voltage for 5000 hours at 85°C)	Leakage current	Less than specified value
	Capacitance change	Within ±30% of the initial value
	tanδ	Less than 300% of specified value
Shelf life (at 85°C)	After 1000 hours no load test, leakage current, capacitance and tanδ are same as load life value. The measurement shall be performed at 20°C by the KS C IEC 60384 - 4	

### DRAWING

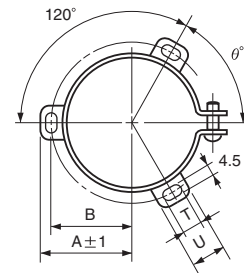
Unit : mm



### TWO LEGS ANGLE



### THREE LEGS ANGLE



### TWO LEGS ANGLE SIZE TABLE

ØD	B	A	T	U	θ°	P
51	33.6	39.9	6	14	30	22
63.5	40.8	46.8	6	14	30	28.6

### THREE LEGS ANGLE SIZE TABLE

ØD	B	A	T	U	θ°	P
51	32.9	38.9	7	12	60	22
63.5	38.4	45.3	7	14	60	28.6
76.2	44.5	51.5	8	16	60	31.8
89	50.8	61	8	16	60	31.8

# LARGE ALUMINUM ELECTROLYTIC CAPACITORS

**GO** series

## ● DIMENSIONS & MAXIMUM PERMISSIBLE RIPPLE CURRENT

$\mu\text{F}$ \diagdown WV	400		450	
1800				
2200	51 × 100	10.9	51 × 120	7.3
2700	51 × 110	13.0	63.5 × 100	13.7
3300	63.5 × 100	15.1	63.5 × 110	15.5
3900	63.5 × 110	16.0	76.2 × 100	18.1
4700	63.5 × 130	18.9	76.2 × 110	20.2
5600	76.2 × 110	21.5	76.2 × 130	20.7
6800	76.2 × 130	22.8	76.2 × 150	23.9
8200	76.2 × 150	24.3	89 × 140	25.6
10000	89 × 140	26.7		
12000	89 × 150	27.3		

Ripple current (A rms) at 85°C, 120Hz  
 Case size  $\varnothing D \times L$  (mm)

## ● FREQUENCY COEFFICIENT OF PERMISSIBLE RIPPLE CURRENT

WV \ Frequency	50Hz	120Hz	300Hz	1kHz	3kHz
400, 450	0.8	1.0	1.1	1.3	1.4