

LARGE ALUMINUM ELECTROLYTIC CAPACITORS

EV High ripple Current, High Reliability Series

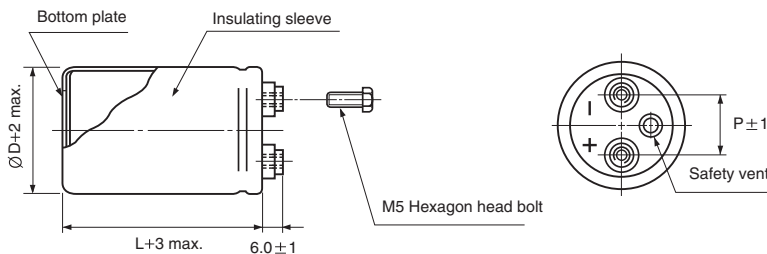
- High ripple current compared with CU series
- Long life guaranteed for 5000 hours load life at 105°C
- Suited for the general-purpose inverter
- Complied to the RoHS directive



Item	Characteristics	
Operating temperature range	-25 ~ +105°C	
Capacitance tolerance	±20% at 120Hz, 20°C	
Leakage current max.	$I = 3\sqrt{CV}$ (μA) (after 5 minutes)	
Dissipation factor max.	0.20 max. at 120Hz, 20°C	
Load life (after application of the rated voltage for 5000 hours at 105°C)	Leakage current	Less than specified value
	Capacitance change	Within ±20% of initial value
	tanδ	Less than 200% of specified value
	500WV products are for 2000hours	
Shelf life (at 105°C)	After 1000 hours no load test, leakage current, capacitance and tanδ are same as load life value. The measurement shall be performed at 20°C by the KS C IEC 60384 - 4	

● DRAWING

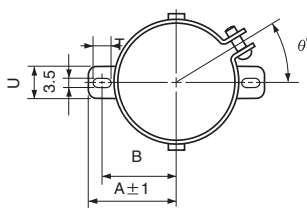
Unit : mm



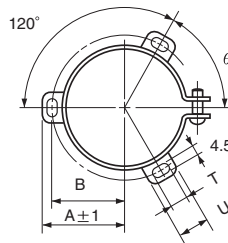
● TWO LEGS ANGLE SIZE TABLE

ØD	B	A	T	U	θ°	P
51	33.6	39.9	6	14	30	22
63.5	40.8	46.8	6	14	30	28.6

● TWO LEGS ANGLE



● THREE LEGS ANGLE



● THREE LEGS ANGLE SIZE TABLE

ØD	B	A	T	U	θ°	P
51	32.9	38.9	7	12	60	22
63.5	38.4	45.3	7	14	60	28.6
76.2	44.5	51.5	8	16	60	31.8
89	50.8	61	8	16	60	31.8

● DIMENSIONS & MAXIMUM PERMISSIBLE RIPPLE CURRENT

WV Item μF	400		450		500	
	ØD×L (mm)	Ripple Current (A rms) 105°C 120Hz	ØD×L (mm)	Ripple Current (A rms) 105°C 120Hz	ØD×L (mm)	Ripple Current (A rms) 105°C 120Hz
1000					51 × 130	6.3
1500					63.5 × 110	8.1
2200	63.5 × 110	11.6	63.5 × 115	12.1	76.2 × 130	10.1
2700	63.5 × 115	13.7	63.5 × 130	14.3	76.2 × 140	12.6
3300	63.5 × 130	16.1	76.2 × 130	16.9	76.2 × 150	14.3
3900	63.5 × 140	18.1	76.2 × 140	20.5	89 × 160	15.0
4700	76.2 × 130	21.2	76.2 × 150	22.6	89 × 160	16.5
5600	76.2 × 150	24.3	76.2 × 160	26.8		
6800	89 × 150	27.1	89 × 150	28.2		

● FREQUENCY COEFFICIENT OF PERMISSIBLE RIPPLE CURRENT

WV	Frequency	50Hz	120Hz	300Hz	1kHz	3kHz
400 ~ 500		0.8	1.0	1.1	1.3	1.4